

MAGICL 6200

Chemiluminescence Immunoassay Analyzer



MAGICL 6200

Chemiluminescence
Immunoassay Analyzer

Reagent/Sample Probe Unit ■■■■

- Equipped with liquid level monitoring and empty suction detection function, automatic cleaning of internal and external walls

Cleaning Unit ■■■■

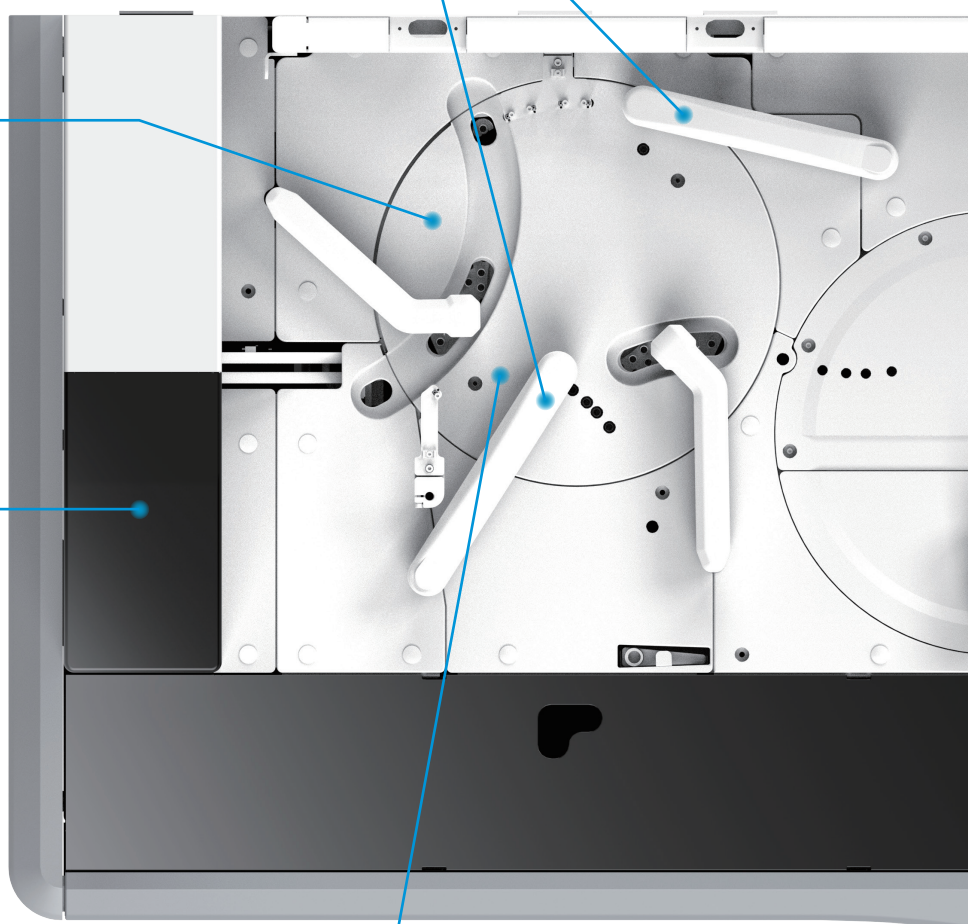
- Fourth-order cleaning unit for more thorough cleaning

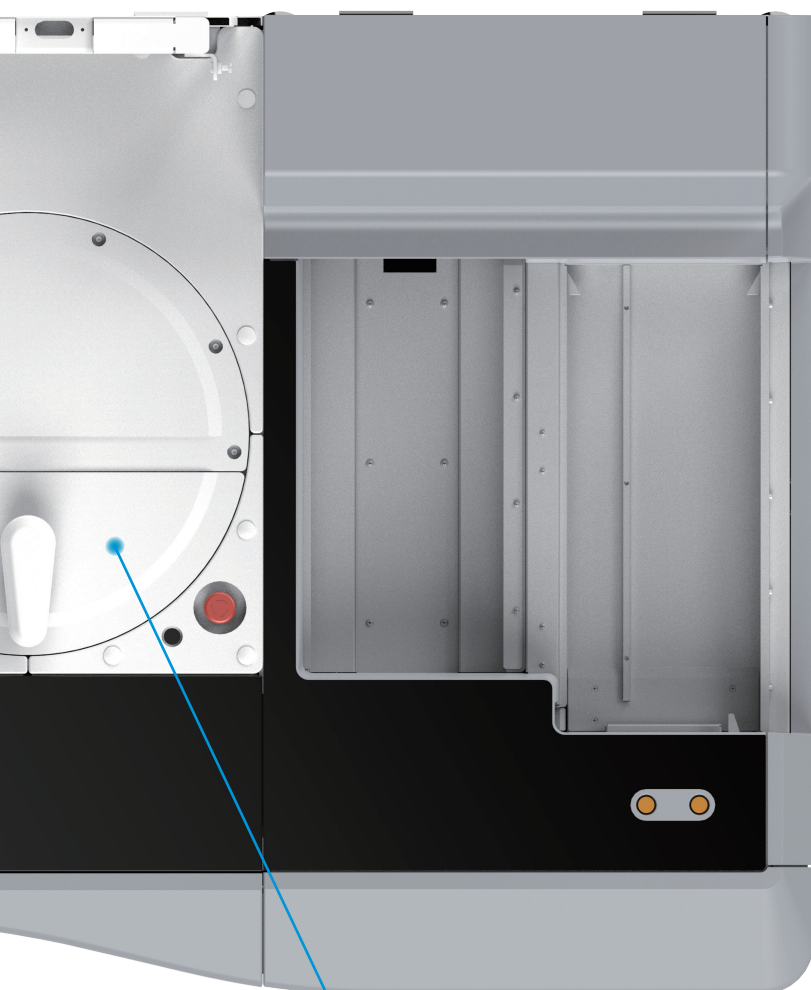
Cuvette Supply Unit ■■■■

- Cuvettes are loaded by pouring, up to a maximum capacity of 2000

Incubation Unit ■■■■

- Circular structure consisting of 5 circles of hole slots, with a total of 205 (5 x 41) incubation positions
- Equipped with a heating belt that maintains the temperature of the tray at $37 \pm 0.5^{\circ}\text{C}$
- PID automatic temperature control with temperature fluctuation $\leq 0.2^{\circ}\text{C}$, ensuring the stability of the reaction





Sample Processing ■■■■

- Throughput: 400 T/H

Sampling Unit ■■■■

- Compatible with different types of sample tubes
- Automatic recognition of sample height, tube cap and other characteristics
- Automatic scanning of barcodes on sample racks and tubes

Track Unit ■■■■

- 3 sample tracks: emergency loading, regular loading and sample returning

Emergency Test Availability ■■■■

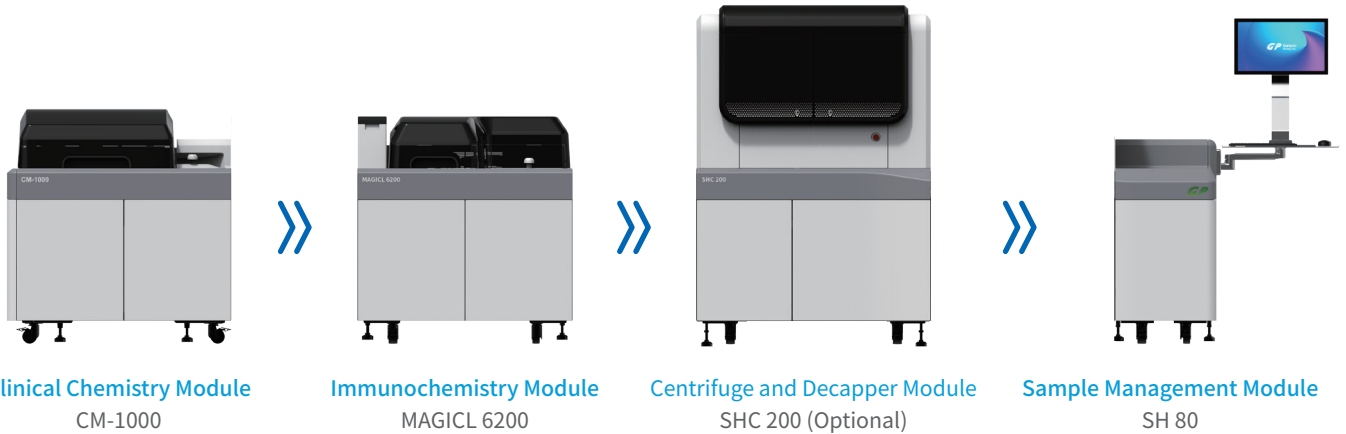
- Independent emergency track, emergency samples in priority

Reagent Tray Unit ■■■■

- 30 reagent positions for simultaneous detection of up to 30 different items
- RFID intelligent reagent loading technology with dynamic refreshing of reagents status

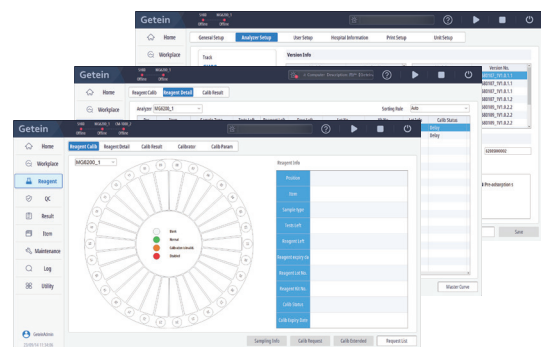
Flexible Expansion ■■■■

- Compact footprint, maximizing space utilization efficiency
- Flexible expansion of centrifuge and decapper module / analysis module (Clinical Chemistry Module CM-1000 / Immunochemistry Module MAGICL 6200)
- Flexible combination of 4 analysis modules at most, fulfilling requirements from multiple laboratories



Intelligent Software System

- 1. Diversity testing mode: rack number and position mode, sequential mode and LIS barcode mode
- 2. Support auto-dilution and auto-retest
Auto-retest: retest with diluted sample or retest with larger sample
- 3. Efficiency priority mode: with intelligent sample dispatching and allocating to achieve maximum efficiency
- 4. Monitor real-time instrument status, testing status, reagent reserve and consumable status to realize immediate abnormalities alarming and log feedback recording



MAGICL 6200

Sample Management Module Technical Parameters

Combination Number	Up to 4 analysis modules combination (CM-1000 / MAGICL 6200)
Sample Tubes	Support 13*75 mm, 13*100 mm sample tubes and 0.5 mL Hitachi cups
Sample Tracks	3 operating tracks: regular/emergency/return
Features	<ol style="list-style-type: none"> 1. Automated retesting and real-time emergency test function 2. Fault prompt 3. Automated sample loading and scanning 4. Friendly human-computer interaction, automated detection and sample returning 5. Equipped with track cover to prevent contamination
Maximum Sample Loading Capacity	190 samples
Sample Transfer Speed	500 samples/H

Immunochemistry Module Technical Parameters

Model	MAGICL 6200
Methodology	Acridinium ester direct chemiluminescence
Analysis Assay	Sandwich format, competition format
Testing Items Number	Up to 85 items tested simultaneously
Test Speed	Up to 400 T/H
Time for the First Result	10 min
Sample Volume	5 μ L~150 μ L (1 μ L increment)
Sample Loading Method	Sample loading by tracks Maximum loading capacity: 190 sample positions
Reagent Volume	10 μ L~200 μ L (1 μ L increment)
Reagent Tray	30 reagent positions Cooling function: internal air circulation cooling with a range of 4~8°C
Cuvettes	Using mainstream circular cuvettes, up to 2000 can be stored in hopper at a time
Test Temperature	Constant temperature at (37.0 \pm 0.5)°C, fluctuation \pm 0.5°C
Preheating Time	<15 min
Magnetic Separator Cleaning	Fourth-order magnetic separation, fourth-order cleaning
Dimension	1670 mm(L) x 926 mm(W) x 1232 mm(H)

TEST ITEMS

Thyroid Markers

TSH	Anti-Tg
T3	Tg
T4	Anti-TSHR
FT3	TMAb
FT4	
Anti-TPO	

Hormones

FSH	UE3
LH	AMH
PRL	SHBG
Estradiol	free β -HCG
Progesterone	PAPP-A
Testosterone	DHEA-S
β -HCG	

Bone Metabolism

25-OH-VD	Osteocalcin
PTH	Calcitonin

Tumor Markers

AFP	CA15-3
CEA	CA19-9
tPSA	CA50
fPSA	CA242
NSE	CA72-4
CYFRA21-1	HE4
ProGRP	PIVKA-II
SCC	*AFP-L3%
CA125	

Infectious Disease

HBsAg	Anti-HBc
Anti-HBs	Anti-HCV
HBeAg	Syphilis
Anti-HBe	HIV Ag/Ab Combo

Diabetes

C-Peptide	Insulin
IAA	

Cardiovascular Markers

hs-cTnI	CK-MB
hs-cTnT	D-Dimer
NT-proBNP	Lp-PLA2
BNP	ST2
Myo	H-FABP

Hypertension

Cortisol	ACTH
Renin	Angiotensin I
ALD	Angiotensin II

Inflammatory Markers

HBP	IL-6
CRP	PCT
SAA	

Thrombus

TAT	TM
PIC	FDP
t-PAIC	

Autoimmune

dsDNA IgG	JO-1 IgG
SS-A IgG	*AMA-M2
SS-B IgG	

Torch

CMV IgM	CMV IgG
Rubella IgM	Rubella IgG
Toxo IgM	Toxo IgG
HSV- I IgM	HSV- I IgG
HSV- II IgM	HSV- II IgG

Anemia

Ferritin
Folate
Vitamin B12

Cytokine

IL-2R
IL-1 β
IL-10
TNF- α
IL-8

Liver Fibrosis

LN
HA
PIIIP N-P
CIV
CG

Gastric Function

PG I
PG II
G17

Brain Damage

S100

Others

NGAL
hGH
IgE
β_2 -MG
IGFBP-3



Only 10 min to get result

Items with * are coming soon.

GP Getein Biotech, Inc.

Add.: No.9 Bofu Road, Luhe District, Nanjing, 211505, China

Tel.: +86-25-68568508/68568594

Fax: +86-25-68568500

E-mail: overseas@getein.com.cn; sales@getein.com.cn

Web.: www.getein.com

